

Press Drive Repowers

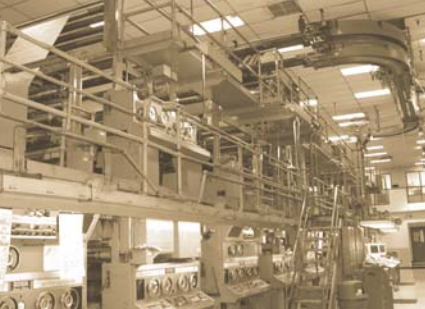
Flexible, Reliable, Innovative Solutions



BROCK
solutions



MASTHEAD
International



Press Drive Repowers

Flexible, Reliable, Innovative Solutions

SYSTEM HIGHLIGHTS

- **ZERO DOWNTIME** - Press change-over with **NO** loss in production.
- **Remote support via modem or internet provides access to experts 24/7.**
- **Proven design with unsurpassed reliability using state-of-the-art equipment.**
- **Elimination of proprietary, obsolete parts.**
- **Diagnostics eliminate “mystery stops”, thus increasing uptime.**
- **Automatic load share, no adjustments necessary.**
- **Fewer web breaks and reduced registration variations.**
- **Fully supported products with complete drawings and training provided.**
- **Superior diagnostics provide quick identification of component failure or operational issues.**
- **View to the future allows for customization and interfacing to external equipment.**

Proven Track Record

Brock Solutions' Press Retrofit Solution is based on a design that has been proven in application after application utilizing state-of-the-art, off-the-shelf equipment. Brock provides a complete System Solution approach that includes Drives, Motors, Drive Master(s), and an HMI for both Shafted and Shaftless press retrofits.

Shaftless operation entails the disconnecting of the horizontal line shaft between various press sections and the electronic synchronization of the units and print couples. With Brock's unit-to-unit shaftless solutions, some of the benefits of shaftless technology can now be extended to traditionally shafted presses. This implementation maintains the internal vertical coupling between each printing units' couples. With Brock's Shaftless Repower Solution, each footprint motor is controlled independently. Additional encoders are installed for print cylinder position feedback.

*“We were very impressed to have experienced **NO Downtime** whatsoever during the transition from DC to AC. The press has been running problem-free since its commissioning. With the busy schedules of today, it was a relief to do such a major project that required very little of my time.” - **Production Manager, The News-Times***

Installation

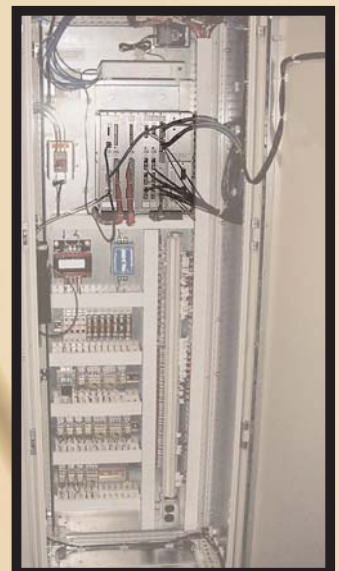
Our ZERO DOWNTIME approach ensures that new equipment is changed-over with no loss in production. The implementation is staged over normal production downtime cycles.

Brock's extensive Training program enables your internal staff the ability to monitor and troubleshoot Press operations. The solution is not a “black-box” - Press staff can be trained to own and understand its design, and more importantly be able to maintain it.

Brock's solution includes Remote Support - we offer customers immediate attention to issues 24/7, 365 days a year.

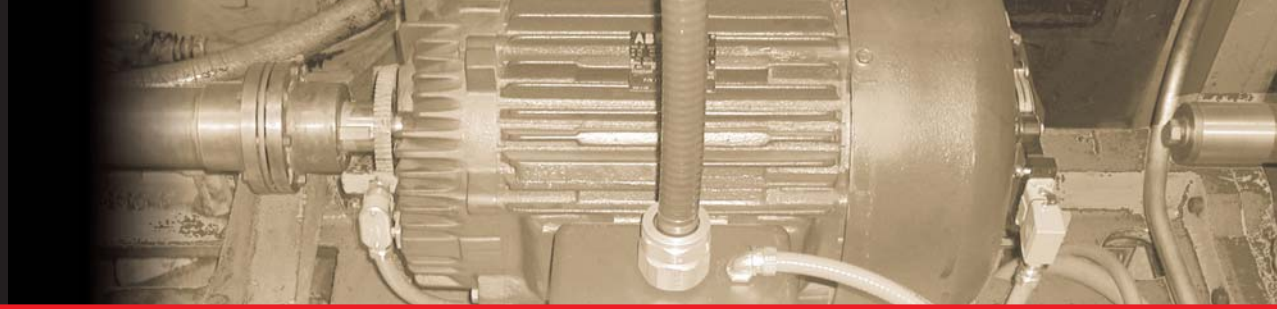


Press Drive Control Cabinet



Master Press Controller Cabinet





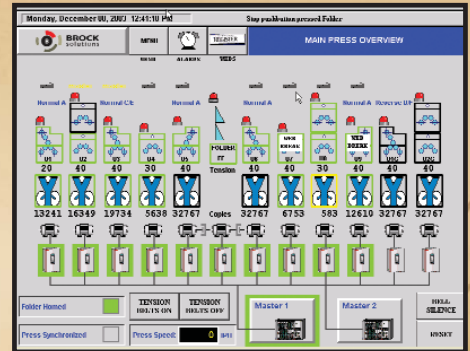
System Components

The Drives portion is simply a component of the system; either AC or DC drives can be used without altering the System Solution and its features. However, an AC solution could provide additional benefits including an ROI in energy savings and no brush maintenance. Interesting to note, drive hardware for shafted and shaftless solutions is virtually the same.

The Master is a SAFphire programmable controller that allows for easy changes and flexibility for future additions. Typical system configurations include a Backup Master for redundancy.

"With the access to printable reports on the new system we have the benefit of reporting operating status, including things like line speed, folder jams, web breaks and more... giving us an accurate account of what's going on right at our fingertips." - Electrical Supervisor, The Union-Tribune

A PC-based touch screen provides a front line status and troubleshooting tool. Features include first web break detection, logging of press events, unit status, drive status, press speed, torque, etc. Detailed logging includes all Master stops and locations, web severers fired and press speed thresholds. All of this information can be generated economically in a report and emailed or printed.



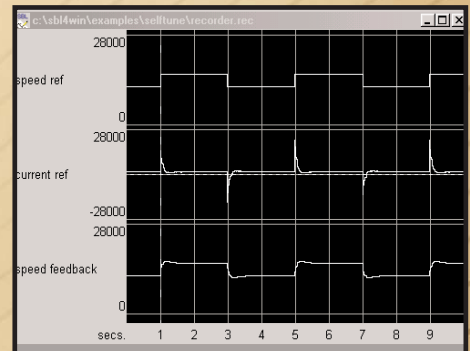
Our flexible network configuration and the use of Distributed I/O allow for the easy implementation of two-way units. Y-Column mounted or control room solutions are a part of the standard offering. Mounting of the cabinets on the Y-column is often the choice when space is a constraint.

Control room solutions provide an environment free from oil, water and ink contamination for the drives and master. The expensive system components are kept in "controlled" surroundings. Distributed I/O is installed in enclosures and mounted on the Y-column in close proximity to the input and output devices to keep wiring to a minimum.

Superior Diagnostics

The Master Press Controller is fully equipped with diagnostic tools that are unparalleled in the industry. With updates in 5-10 milliseconds, customized text annunciation and individual control block monitoring the Master Controller allows superior troubleshooting capabilities and support features that are virtually unmatched.

The Master Press Controller has built-in Scope and Chart Recorder features offering additional enhanced real time diagnostic tools.



"We now have an old press that runs like a new one! We've had fewer web breaks and better registration - one of the nicest installations we've had - Smooth and Flawless" - Electrical Supervisor, The News Tribune

Benefits of Shafted Press Retrofits

- Speed regulation is executed in the master controller and all drives are torque regulators - no selection of a master drive is required
- Automatic Load Sharing - no load share adjustments are necessary
- Any drive can be taken offline without affecting the system's functionality
- Production is possible if an encoder fails
- Decrease in waste and less registration variation due to better speed control and controlled deceleration
- Touch screen user interface allows quick diagnosis of web breaks or any press stops

"We've experienced fewer web breaks on start up and shutdown and can easily monitor problems on the press as they arise. We were confident when we made our choice, but we had no idea the system would offer as much as it does." - Electrical Supervisor, The Union-Tribune

Benefits of Shaftless Press Retrofits

- Ability to independently plate-up any unit not running reduces set-up time and allows for quicker press turn-arounds
- Elimination of horizontal line shaft allows maintenance more flexibility in scheduling activities
- Automatic plate-up positioning: Press operators can automatically position the plate cylinder in preset positions for applying the plates
- Number of cutoff compensator settings are dramatically reduced allowing for more consistent startups and reduced waste
- Shorter web paths can be achieved by eliminating all unit to unit compensators and performing the circumferential registration adjustment electronically
- Electronic Circumferential registration adjustment provides more precise adjustment than mechanical compensator
- Automatic homing of the folder and units for mode changes
- Elimination of having to put units on the mark before engaging the line shaft
- Programmable head shift compensation can be implemented
- Easy press expansion (addition of new units) without the requirement to expand the mechanical line shaft

Brock Solutions is an Engineering Solutions company. Brock Solutions' Printing Group specializes in providing technologically advanced solutions designed to minimize interruptions to normal production. Brock's experience and technical know-how allow for the integration of new and existing equipment while laying the ground-work for future upgrades.

Masthead International Inc. is a leader in Printing Press Services. Masthead specializes in turnkey press installations, customized rebuild programs, web width changes, engineered reconfigurations, equipment sourcing and mechanical / electrical audits.

Brock Solutions and Masthead International have joined forces to provide the Newspaper industry with innovative web offset press enhancements designed to increase productivity in the pressroom.



BROCK
solutions

Brock Solutions Inc.
Toll free 1-877-702-7625
www.brocksolutions.com



MASTHEAD
International

Masthead International
Toll free 1-800-545-6908
www.masthead.net